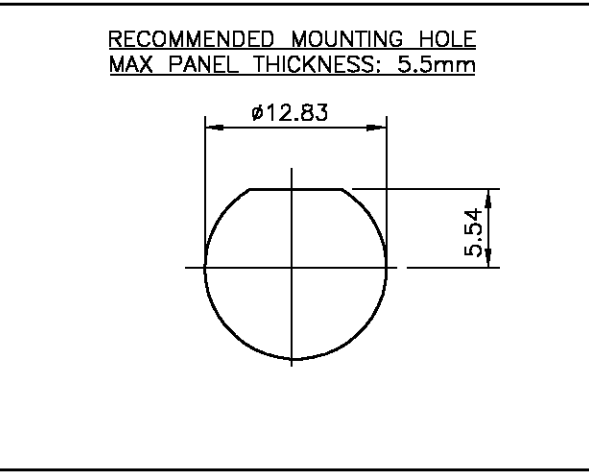
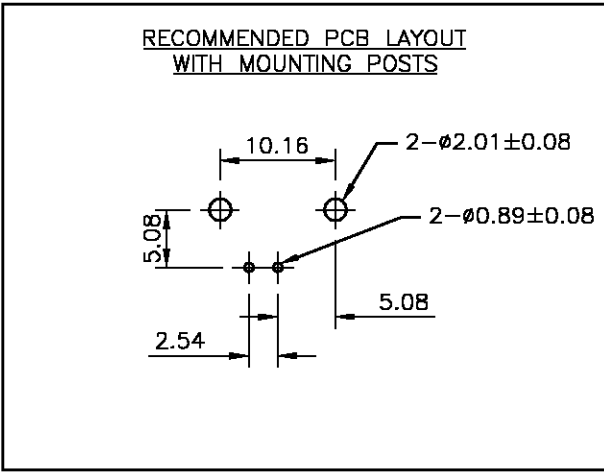
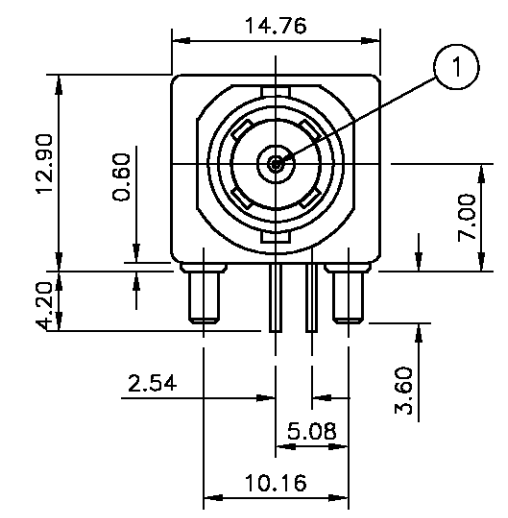
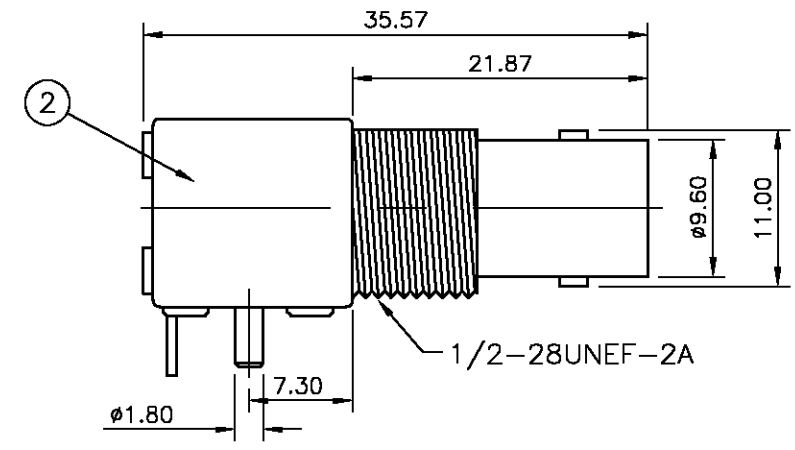
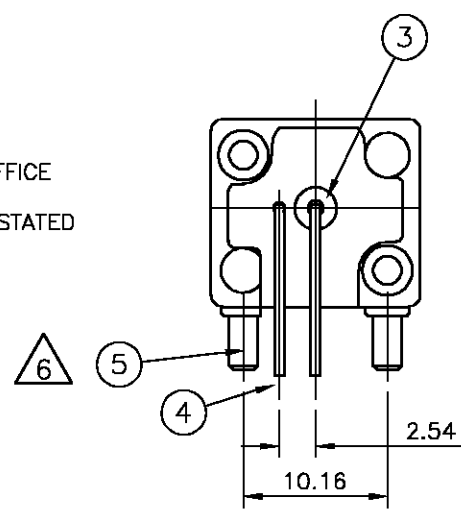


THIS DRAWING IS UNPUBLISHED. RELEASED FOR PUBLICATION FEB , 2005.  
 © COPYRIGHT 2005 BY TYCO ELECTRONICS CORPORATION. ALL RIGHTS RESERVED.

LOC	DIST	REVISIONS			
P	LTR	DESCRIPTION	DATE	DWN	APVD
E	B	C	EBD0-0267-04	07FEB05	JMS FWK

- NOTES:
- 1 SINGLE PACK IN ACCORDANCE WITH AMP SPEC 107-3275
  - 2 50 TRAY PACK IN ACCORDANCE WITH AMP SPEC 107-3275
  - 3 Au PLATING OVER Ni PLATING OVER Cu PLATING
  - 4 Ni PLATING OVER Cu PLATING
  - 5 TIN PLATING
6. CHARACTERISTICS
- |                               |            |
|-------------------------------|------------|
| FREQUENCY RANGE:              | DC-2GHz    |
| NOMINAL IMPEDANCE:            | 50 OHMS    |
| WORKING VOLTAGE:              | 500V RMS   |
| INSULATION RESISTANCE:        | 5000 MOHMS |
| DIELECTRIC WITHSTAND VOLTAGE: | 1500V RMS  |
| CONTACT RESISTANCE:           |            |
| CENTRE CONTACT                | 1.5 mOHMS  |
| OUTER CONTACT                 | 0.2 mOHMS  |
7. MECHANICAL CHARACTERISTICS
- |             |           |
|-------------|-----------|
| DURABILITY: | 50 CYCLES |
|-------------|-----------|
8. FOR TECHNICAL DATA REFER TO YOUR LOCAL TYCO ELECTRONICS SALES OFFICE
9. ALL DIMENSIONS ARE NOMINAL FOR REFERENCE ONLY UNLESS OTHERWISE STATED



QTY	QTY	MATERIAL	DESCRIPTION	ITEM
2	2	BRASS	MOUNTING POST	5
1	1	BRASS	SOLDER TAIL	4
1	1	PE-606	INSULATOR	3
1	1	ZINC ALLOY	BODY	2
1	1	BRASS	CONTACT	1
6--0	1--0	MATERIAL	DESCRIPTION	ITEM

THIS DRAWING IS A CONTROLLED DOCUMENT.		DWN J.SANDWELL 07FEB05	Tyco Electronics Corporation Bideford, UK, EX39 4HE	
DIMENSIONS: mm		CHK S.PARLOW 07FEB05	NAME F.WHEELER-KING	
TOLERANCES UNLESS OTHERWISE SPECIFIED:		APVD F.WHEELER-KING 07FEB05	PRODUCT SPEC 108-3435	
0 PLC ± -		APPLICATION SPEC 411-3247		
1 PLC ± -		SIZE A3		
2 PLC ± -		CAGE CODE 00779		
3 PLC ± -		DRAWING NO C-1337521		
4 PLC ± -		RESTRICTED TO		
ANGLES ± -		SCALE NTS		
MATERIAL SEE TABLE		SHEET 1 OF 1		
FINISH SEE TABLE		REV C		
CUSTOMER DRAWING				